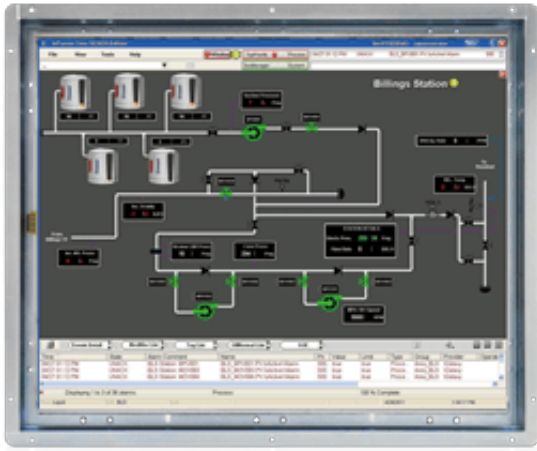


LCD-KIT-F19A

19" Slim Open Frame Monitor



Features

- » 12.1"~19" open frame architecture for embedded integration
- » Over 350cd/m² high brightness and 50000hrs MTFB long lifetime panel
- » Analog VGA or digital DVI interfaces support most of general systems
- » Various touch panel solution : Resistive / Resistive touch windows / PCAP multi-touch
- » Optional 9-36V DC module
- » -20°C~60°C extended operating temperature
- » Support software OSD for remote control applications

Specifications

Dimensions	
Dimensions	449 x 374 x 49.45
Environment	
Humidity	10%~95%, non-condensing
Operating Temperature	-20°C ~ 60°C
Storage Temperature	-20°C ~ 70°C
LCD	
Brightness (cd/m ²)	350
Contrast Ratio	1000:1
LCD Color	16.7M
Resolution	1280 x 1024
Size	19"
Viewing Angle (H-V)	170°/160°
Touch	
Touch Screen	Resistive type 5-wire single touch / Penmount 6000 or Projected capacitive 2-point touch / EETI EXC7200 (Assembly by adhesive tape)
Weight	
Weight	4.3 kg/6.2 kg

Ordering Information

LCD-KIT-F19A-R10	19" 350 cd/m ² SXGA open frame monitor, VGA and DVI-D input, R10
LCD-KIT-F19A/PC-R10	19" 350 cd/m ² SXGA open frame monitor, VGA and DVI-D input, Projected capacitive touch window USB interface,R10
LCD-KIT-F19A/TW-R10	19" 350 cd/m ² SXGA open frame monitor, VGA and DVI-D input, Resistive touch window RS-232/USB interface,R10
LCD-KIT-F19A/R-R10	19" 350 cd/m ² SXGA open frame monitor, VGA and DVI-D input, Resistive touch screen RS-232/USB interface,R10

Packing List

1 x AC power cable	1 x VGA cable
--------------------	---------------

1 x USB cable (for Touch)	1 x AC power adapter
---------------------------	----------------------