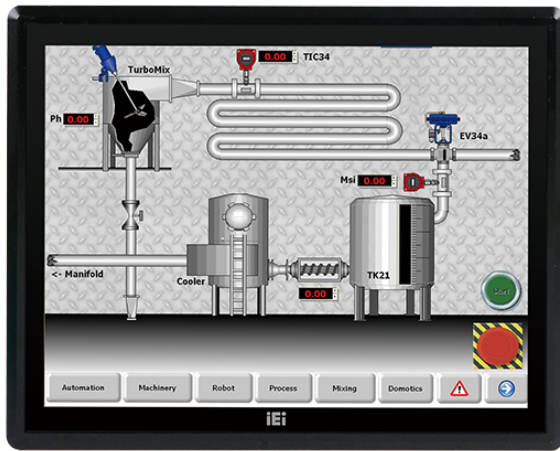


# DM-F19A

17"~24" DM-F IP65 Industrial Monitor



## Features

- » Robust IP65 aluminum front bezel
- » Aesthetic ultra-thin bezel for seamless panel mount installation
- » Wide range 9V~36V DC input
- » DVI / DisplayPort / VGA flexible video input solution
- » Projected capacitive multi-touch and resistive single touch options
- » Wide temperature support

## Specifications

Display	
Backlight MTBF(hrs)	50000
Brightness(cd/m2)	350
Contrast Ratio	1000:1
LCD Size	19"(4:3)
Max Resolution	1280 (W) x 1024 (H)
Environment	
Humidity	10% to 95% (non-condensing)
IP Level	IP 65 compliant front panel
Operating Temperature	-20°C ~ 60°C
Storage Temperature	-20°C ~ 70°C
I/O Interface	
I/O Ports and Switches	1 x VGA (DB-15)
	1 x DVI
	(F19A only)
	1 x HDMI™ (F17A only)
	1 x DisplayPort 1.1
	1 x USB 2.0 (touch)
	1 x RS-232 (reserved for resistive touch ATO)
	1 x Lockable 12V DC jack
	1 x 9V-36V terminal block
LCD	
LCD Color	16.7M
Pixel Pitch (mm)	0.294 x 0.294
Viewing Angle (H-V)	170° / 160°
Physical Characteristics	
Cutout Dimensions	430 x 355
Dimensions (LxWxH) (mm)	372.4 x 447.4 x 49.57
Power	
Power adapter	9V~36V DC
Touch	

Touch Controller	5-wire resistive single touch window/ Penmount 6000
Touch Screen	2-point projected capacitive touch window/ EETI EXC7200
Weight	
Weight	5.4 /8.4

## Ordering Information

DM-F19A/R-R31	19" 350 cd/m <sup>2</sup> SXGA LCD monitor, Aluminum die casting front panel, Black color, W/ USB resistive touch screen, 9 ~36V DC input, Powder paint, R31
DM-F19A/PC-R31	19" 350 cd/m <sup>2</sup> SXGA LCD monitor, Aluminum die casting front panel, Black color, W/ USB projected capacitive touch screen, 9 ~36V DC input, Powder paint, R31

## Packing List

1 x Touch Pen	1 x USB Cable
1 x VGA Cable	