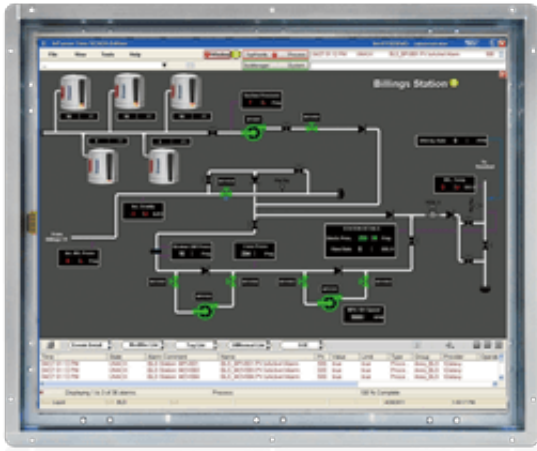


# LCD-KIT-F17A

17" Slim Open Frame Monitor



## Features

- » 12.1"~19" open frame architecture for embedded integration
- » Over 350cd/m<sup>2</sup> high brightness and 50000hrs MTFB long lifetime panel
- » Analog VGA or digital DVI interfaces support most of general systems
- » Various touch panel solution : Resistive / Resistive touch windows / PCAP multi-touch
- » Optional 9-36V DC module
- » -20°C~60°C extended operating temperature
- » Support software OSD for remote control applications

## Specifications

| Dimensions                      |   |
|---------------------------------|---|
| Dimensions                      | 410 x 343 x 49.4  |
| Environment                     |   |
| Humidity                        | 10%~95%, non-condensing   |
| Operating Temperature           | -20°C ~ 60°C  |
| Storage Temperature             | -20°C ~ 70°C  |
| LCD                             |   |
| Brightness (cd/m <sup>2</sup> ) | 350   |
| Contrast Ratio                  | 800:1   |
| LCD Color                       | 16.7M   |
| Resolution                      | 1280 x 1024   |
| Size                            | 17"   |
| Viewing Angle (H-V)             | 170°/160°   |
| Touch                           |   |
| Touch Screen                    | Resistive type 5-wire single touch / Penmount 6000 or Projected capacitive 2-point touch / EETI EXC7200 (Assembly by adhesive tape) |
| Weight                          |   |
| Weight                          | 3.3 kg/4.1 kg   |

## Ordering Information

|                     |   |
|---------------------|---|
| LCD-KIT-F17A-R10    | 17" 350 cd/m <sup>2</sup> SXGA open frame monitor, VGA and DVI-D input, R10   |
| LCD-KIT-F17A/PC-R10 | 17" 350 cd/m <sup>2</sup> SXGA open frame monitor, VGA and DVI-D input, Projected capacitive touch window USB interface,R10 |
| LCD-KIT-F17A/TW-R10 | 17" 350 cd/m <sup>2</sup> SXGA open frame monitor, VGA and DVI-D input, Resistive touch window RS-232/USB interface,R10     |
| LCD-KIT-F17A/R-R10  | 17" 350 cd/m <sup>2</sup> SXGA open frame monitor, VGA and DVI-D input, Resistive touch screen RS-232/USB interface,R10     |

## Packing List

|                    |               |
|--------------------|---------------|
| 1 x AC power cable | 1 x VGA cable |
|--------------------|---------------|

1 x USB cable (for Touch)

1 x AC power adapter