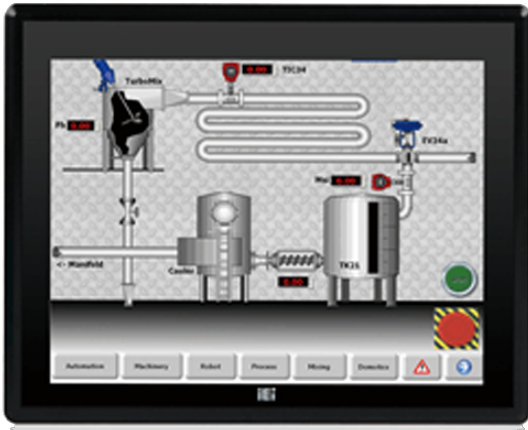


## PPC-F17A-H81

## Intelligent Industrial Panel PC



## Features

- » Scalable Intel® H81 chipset supports LGA1150 Intel® 4th generation Core™ i7/i5/i3, Pentium® or Celeron® processor with up to 65W TDP
- » Robust IP65 aluminum front bezel
- » Aesthetic ultra-thin bezel for seamless panel mount installation
- » Projected capacitive multi-touch
- » Dual full-size PCIe Mini card expansion
- » AC/DC power input options (DC model by build to order manufacturing)

## Specifications

Display	
Backlight MTBF(hrs)	50000
Brightness(cd/m2)	350
Contrast Ratio	800:1
LCD Size	17"(5:4)
Max Resolution	1280 (W) x 1024 (H)
Environment	
Humidity	10% to 95% (non-condensing)
IP Level	IP 65 compliant front panel
Operating Temperature	-10°C~50°C (14°F~122°F)
Storage Temperature	-20°C~60°C (-4°F~140°F)
I/O Interface	
I/O Ports and Switches	2 x RJ-45 LAN Port
	2 x USB 3.0
	4 x USB 2.0
	1 x HDMI™ output
	4 x RS-232
	1 x RS-422/485
	1 x VGA output
	1 x AC/DC power plug (DC model is by build to order manufacturing)
	1 x AT/ATX switch
	1 x Clear CMOS
	1 x Reset button
	1 x Power switch
LCD	
LCD Color	16.7M
Pixel Pitch (mm)	0.26 x 0.26
Viewing Angle (H-V)	170° / 160°
Physical Characteristics	

Cutout Dimensions	323 x 390
Dimensions (LxWxH) (mm)	341.4 x 408.4 x 73.8
<b>Power</b>	
Power Supply	AC input ATX power supply
	220W power supply
	Input: 90VAC-264VAC, 50/60Hz
	Output (max.): 3.3V@10A, 5V@14A, 12V@14A, -12V@0.3A
<b>Touch</b>	
Touch Controller	5-wire resistive type single touch window (Penmount 6000), 3H
Touch Screen	2-point projected capacitive touch window (EETI EXC7200), 6H
<b>Weight</b>	
Weight	7.5/10.7 (kg)

## Ordering Information

PPC-F17AA-H81i-i5/4G/R-R15	17" 350 cd/m2 SXGA Panel PC with Intel H81 chipset, Core i5 Quad Core i5-4570S Processor (6M Cache, up to 3.60 GHz), TDP 65W, 2GB RAM*2, support iRIS-2400, black color, PSU ACE-A622C, resistive touch window with AG coating, R15
PPC-F17AA-H81i-P/4G/R-R15	17" 350 cd/m2 SXGA Panel PC with Intel H81 chipset, Intel® Pentium® Processor G3420 (3M Cache, 3.20 GHz), TDP 53W, 2GB RAM*2, support iRIS-2400, black color, PSU ACE-A622C, resistive touch window with AG coating, R15

## Packing List

1 x Power Cord (Depends on shipping region)	1 x Screw Kit
---	---------------