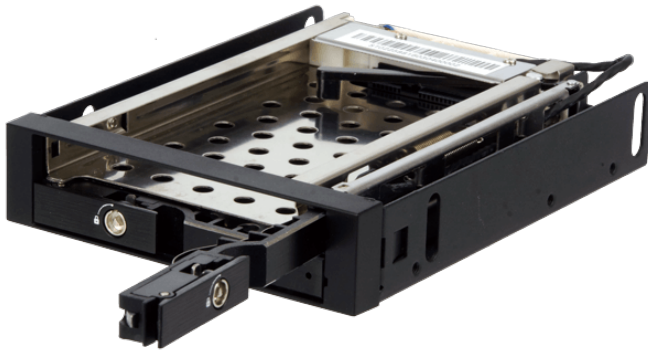


RHD-102SATA

Dual 2.5" HDD-ROM SATA Internal Enclosure



Features

- » Fits 3.5" floppy drive mechanics, which can install PC chassis and server
- » Unique tray-less and tool-less design
- » Support 2.5" 9.5mm thickness SATA / SAS HDD
- » Lock function for more security
- » Patented NSS connector support 50,000 times Hot Swap

Specifications

| | |
|--------------------|-----------------------------------|
| General | |
| Dimensions | 140 x 101.6 x 25 (L x W x H) (mm) |
| Material | |
| Material | Aluminum & SPCC |
| Weight | |
| Weight | 0.304 kg (Gross) |
| Data Transfer Rate | |
| Data Transfer Rate | up to 6Gb/Sec |
| Drive Bay Space | |
| Drive Bay Space | One 3.5" drive bay |
| HDD Type | |
| HDD Type | 2.5" SATA/SAS |
| | 2 x HDD/SSD |
| Cooling Fan | |
| Cooling Fan | No |
| Hot Swap | |
| Hot Swap | Yes |
| Keylock | |
| Keylock | Yes |
| Signal Out | |
| Signal Out | SATA 7-Pin |
| Color | |
| Color | Black |
| Interface | |
| Interface | SATA 7 + 15 Pin |

Ordering Information

| | |
|-----------------|--|
| RHD-102SATA-R20 | DRIVER CAGE;3.5 DEVICE BAY;2.5" SATA /SAS HDD&SSD*2,R20;;;RoHS |
|-----------------|--|