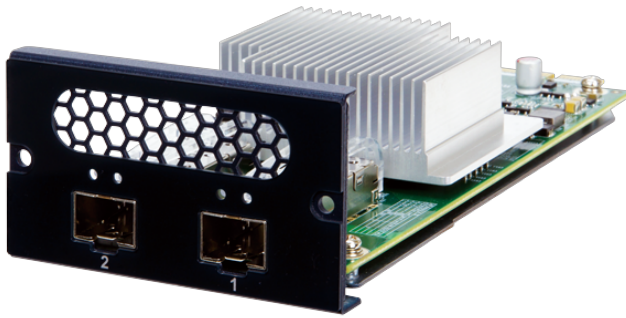


PuIM-25G2SF

Mellanox ConnectX-4 Lx based Network Interface Card support Dual 25GbE with 2 x SFP28 and PCIe 3.0 x8 Interface



Features

- » 2 x Mellanox ConnectX-4 Lx EN
- » 2 ports 25 GbE SFP28 connector
- » PCIe 3.0 x8
- » RoHS /CE/FCC compliant
- >> [PuIM Series Selection Guide Page](#)

Specifications

| Physical Characteristics | |
|--------------------------|----------------------------------|
| Dimensions (LxWxH) (mm) | 165.50 (L) x 77.8 (W) x 44.2 (H) |
| I/O Interface | |
| Ethernet | 2 x SFP+ (SFP28) |
| Environment | |
| Operating Temperature | 0°C ~ 40°C (32°F ~ 104°F) |
| Storage Temperature | -20°C ~ 75°C (-4°F ~ 167°F) |
| Humidity | 5% ~ 90% RH, Non-condensing |
| Certifications | |
| Safety & EMC | RoHS/CE/FCC compliant |
| Card Slot Interface | |
| PCIe | PCIe 3.0 x8 |
| Card Features | |
| Speed | 1GbE/10GbE/25GbE |
| Controller Chip | Mellanox ConnectX-4 Lx EN |

Ordering Information

| | |
|---------------------|--|
| PuIM-25G2SF-MLX-R10 | Mellanox ConnectX-4 Lx based Network Interface Card support Dual 25GbE with 2 x SFP28 by 1 PCIe 3.0 x 8 Interface. |
|---------------------|--|

Packing List

| | |
|----------------------------|------------------------------|
| 1 x PuIM-25G2SF-MLX module | 1 x L-shaped T10 Plum Wrench |
| 1 x QIG | |