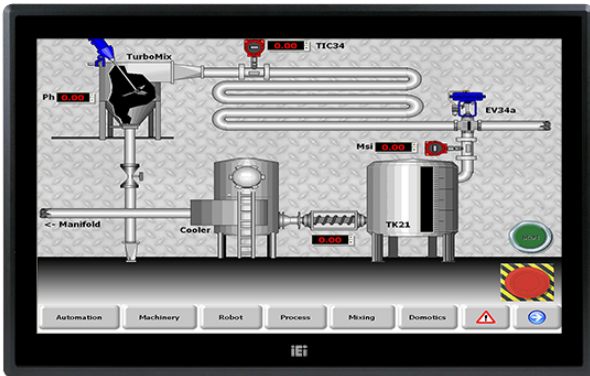


# DM-F24A

17"~24" DM-F IP65 Industrial Monitor



## Features

- » Robust IP65 aluminum front bezel
- » Aesthetic ultra-thin bezel for seamless panel mount installation
- » Wide range 9V~36V DC input
- » HDMI™ / DisplayPort / VGA flexible video input solution
- » Projected capacitive multi-touch and resistive single touch options
- » Wide temperature support

## Specifications

<b>Display</b>	
LCD Size	24"(16:9)
Brightness(cd/m2)	250
Max Resolution	1920 (W) x 1080 (H)
Contrast Ratio	3000:1
Backlight MTBF(hrs)	30000
<b>I/O Interface</b>	
I/O Ports and Switches	1 x VGA (DB-15)
	1 x HDMI™ (F17A only)
	1 x DisplayPort1.1
	1 x USB 2.0 (touch)
	1 x RS-232 (reserved for resistive touch ATO)
	1 x Lockable 12V DC jack
	1 x 9V-36V terminal block
<b>Power</b>	
Power adapter	9V~36V DC
<b>Environment</b>	
Operating Temperature	-10°C ~ 50°C
Humidity	10% to 95% (non-condensing)
Storage Temperature	-20°C ~ 60°C
IP Level	IP 65 compliant front panel
<b>Physical Characteristics</b>	
Dimensions (LxWxH) (mm)	382 x 600 x 49.4
Cutout Dimensions	358.6 x 576.6
<b>Weight</b>	
Weight	7.6 / 10.9
<b>LCD</b>	
LCD Color	16.7M
Pixel Pitch (mm)	0.28 x 0.28
Viewing Angle (H-V)	178° / 178°
<b>Touch</b>	
Touch Screen	2-point projected capacitive 2-point touch window/ EETI EXC7200

## Ordering Information

DM-F24A/PC-R41	23.8" 250 cd/m <sup>2</sup> FHD LCD monitor, Aluminum front panel, Black color, W/USB projected capacitive touch screen, 9 ~36V DC input, Powder paint, R41
----------------	---

## Packing List

1 x Touch Pen	1 x USB Cable
1 x VGA Cable	