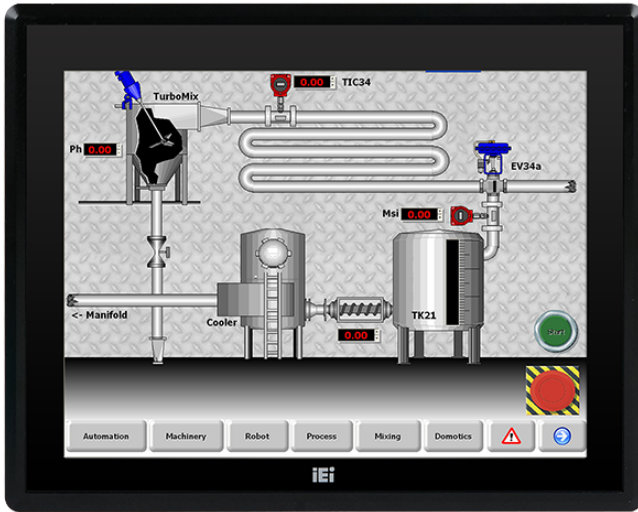


# PPC-F15A-H81

## Intelligent Industrial Panel PC

### Features



- » Scalable Intel® H81 chipset supports LGA1150 Intel® 4th generation Core™ i7/i5/i3, Pentium® or Celeron® processor with up to 65W TDP
- » Robust IP65 aluminum front bezel
- » Aesthetic ultra-thin bezel for seamless panel mount installation
- » Projected capacitive multi-touch
- » Dual full-size PCIe Mini card expansion
- » AC/DC power input options (DC model by build to order manufacturing)

### Specifications

Display	
Backlight MTBF(hrs)	70000
Brightness(cd/m2)	450
Contrast Ratio	800:1
LCD Size	15"(4:3)
Max Resolution	1024 (W) x 768 (H)
Environment	
Humidity	10% to 95% (non-condensing)
IP Level	IP 65 compliant front panel
Operating Temperature	-10°C~50°C (14°F~122°F)
Storage Temperature	-20°C~60°C (-4°F~140°F)
I/O Interface	
I/O Ports and Switches	2 x RJ-45 LAN Port
	2 x USB 3.0
	4 x USB 2.0
	1 x HDMI™ output
	4 x RS-232
	1 x RS-422/485
	1 x VGA output
	1 x AC/DC power plug (DC model is by build to order manufacturing)
	1 x AT/ATX switch
	1 x Clear CMOS
	1 x Reset button
	1 x Power switch
LCD	
LCD Color	16.2M
Pixel Pitch (mm)	0.29 x 0.29
Viewing Angle (H-V)	160° / 140°
Physical Characteristics	

Cutout Dimensions	285.6 x 361.1
Dimensions (LxWxH) (mm)	303 x 378.5 x 68.7
<b>Power</b>	
Power Supply	AC input ATX power supply
	220W power supply
	Input: 90VAC-264VAC, 50/60Hz
	Output (max.): 3.3V@10A, 5V@14A, 12V@14A, -12V@0.3A
<b>Touch</b>	
Touch Controller	5-wire resistive type single touch window (Penmount 6000), 3H
Touch Screen	2-point projected capacitive touch window (EETI EXC7200), 6H
<b>Weight</b>	
Weight	5.6/ 8.3

## Ordering Information

PPC-F15AA-H81i-i5/4G/R-R23	15" 450 cd/m <sup>2</sup> XGA Panel PC with Intel H81 chipset, Core i5 Quad Core i5-4570S Processor (6M Cache, up to 3.60 GHz), TDP 65W, 2GB RAM*2, support iRIS-2400, black color, PSU ACE-A622C, resistive touch window with AG coating, R23
PPC-F15AA-H81i-P/4G/R-R23	15" 450 cd/m <sup>2</sup> XGA Panel PC with Intel H81 chipset, Intel® Pentium® Processor G3420 (3M Cache, 3.20 GHz), TDP 53W, 2GB RAM*2, support iRIS-2400, black color, PSU ACE-A622C, resistive touch window with AG coating, R23
PPC-F15AA-H81i-P/4G/PC-R23	15" 450 cd/m <sup>2</sup> XGA Panel PC with Intel H81 chipset, Intel® Pentium® Processor G3420 (3M Cache, 3.20 GHz), TDP 53W, 2GB RAM*2, support iRIS-2400, black color, PSU ACE-A622C, projective capacitive touch window with AG coating, R23

## Packing List

1 x Power Cord (Depends on shipping region)	1 x Screw Kit
---	---------------