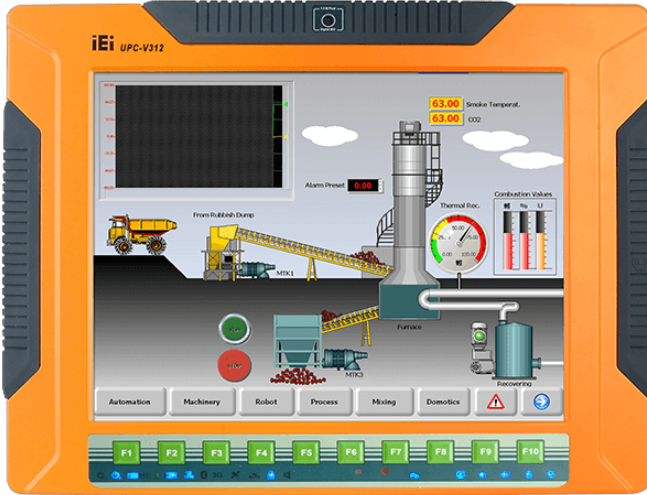


# UPC-V312-D525

Intel® Atom™ D525 Dual Core Processor

## Features



- » Fully IP 65 compliant with Intel® Atom™ D525 1.8GHz dual-core processor
- » 12.1" 600 nits 1024 x 768 LCD with LED backlight
- » Dual DC input, 9V ~ 36V and 10.5V ~ 36V, switch automatically
- » Dual-band 2.4/5 GHz Wi-Fi 802.11 a/b/g/n 3T3R MIMO design
- » Reserved space for 3.75G HSUPA USB module
- » Optional GPS receiver
- » Optional EM or Mifare RFID reader
- » Optional Bluetooth module
- » Built-in 2-mgeapixel webcam with AF, AE and AWB capabilities
- » CAN-bus interface with isolation
- » Robust die-casting aluminum chassis

## Specifications

<b>Display</b>	
Backlight MTBF(hrs)	50000
Brightness(cd/m2)	600
Contrast Ratio	700 : 1
LCD Size	12.1"
Max Resolution	1024(W) x 768(H)
<b>Environment</b>	
Humidity	10% to 95% (non-condensing)
Operating Temperature	-20°C~60°C
Storage Temperature	-40°C~85°C
<b>Expansion Slots</b>	
Expansion Slots	PCIe Mini slot for Wi-Fi module
	PCIe Mini slot
<b>I/O Interface</b>	
I/O Ports and Switches	RS-422/485 (4-pin box header)
	RS-232 (DB-9 connector)
	CAN-bus (3-pin terminal block)
	GbE LAN (RJ-45 connector)
	4 x USB connector
	Audio jack (Line-out, Mic)
	VGA port (DB-15 connector)
RAM	On-board 2GB DDR3 SO-DIMM (system max. 2GB )
<b>LCD</b>	
LCD Color	16.2M
Pixel Pitch (mm)	0.24mm x 0.24mm
Viewing Angle (H-V)	150° / 130°
<b>Other Features</b>	
System Cooling	Fanless

Physical Characteristics	
Cutout Dimensions	338.5 x 276.25
Dimensions (LxWxH) (mm)	338.5 x 276.25 x 62.86
Power	
Power adapter	Input: 90VAC~264VAC, 50/60Hz; Output: 19V DC
System	
Chipset	Intel® ICH8M
CPU	Intel® Atom™ D525 1.8GHz dual-core processor
SSD	CF Type II / mSATA (SATA2 signal)
Touch	
Touch Controller	DMC 9000
Touch Screen	5-wire resistive type with RS-232 interface
Weight	
Weight	4.5 kg/ 6.8 kg
I/O Interface	
I/O Interface	1 x AT/ATX Switch
	VGA((DB-15))
	4 x USB2.0
	1 x Reset Button
	1 x RS-422/485((4-pin box header))
	1 x RS-232((DB-9))
	2 x Power In(DC jack/terminal block)
	1 x Mic
	1 x CAN-bus((3-pin terminal block))
	1 x LAN(RJ-45 for Gbe)
	1 x Line out

## Ordering Information

UPC-V312-D525/R/2G-R13	12.1" 600cd/m <sup>2</sup> XGA fanless full IP65 panel PC with Intel® Atom™ D525 dual core 1.8GHz,802.11a/b/g/n wireless module, resistive touch screen, 2M camera,microphone,2GB DDR3 RAM, R13
------------------------	---

## Packing List

1 x Power Adpater	1 x Screw Kit
1 x Touch Pen	