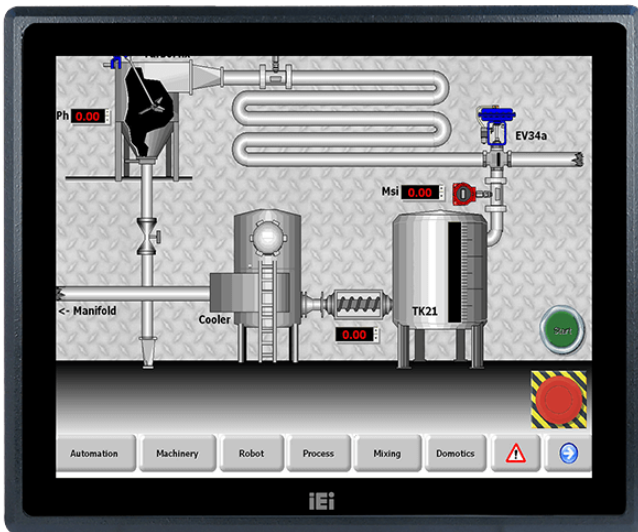


# PPC-F17B-BT-QGW

Cloud Based IPC built-in QTS Gateway OS for IIOT



## Features

- » Built-in QTS Gateway operating system that can be visualized immediately
- » Supports remote connection (myQNAPcloud) and hybrid backup (Hybrid Backup Sync)
- » QRM+ easily monitors IPMI equipment, servers, PCs and production line equipment
- » Q'center centralizes management of multiple QNAP NAS and the IPC equipped with QTS Gateway
- » Surveillance Station for remote video surveillance, 24/7 security
- » Seven levels of data security protection to protect your valued data

## Specifications

<b>Form factor</b>	
SBC Form Factor	CPU: Intel® Celeron® processor J1900 (2M cache, up to 2.42 GHz)
<b>System</b>	
Cooling method / System Fan	Fanless
Chipset	SoC
Memory Max.	1 x 4 GB 204-pin DDR3L SO-DIMM pre-installed
Drive Bays	1 x 2.5" SATA 6Gb/s HDD/SSD bay
<b>Indicator&amp;Buttons</b>	
Indicators	Power/HDD/Com port
Buttons	1 x Power switch
<b>I/O Interface</b>	
Display	LCD Size: 17" Brightness(cd/m2): 350 Max Resolution: 1280 x 1024 Contrast Ratio: 800:1 LCD Color: 16.7M Pixel Pitch(mm): 0.26 x 0.26 Viewing Angle(H-V): 170° / 160° Backlight MTBF(hrs): 50000
I/O Interface	2 x RJ-45 LAN port 2 x USB 3.0 2 x USB 2.0 1 x HDMI™ 2 x RS-232 1 x RS-232/422/485 1 x VGA 1 x 9V ~ 36V DC jack (4-pin) 1 x 9V ~ 36V DC terminal block

	1 x Line-out
	1 x Power switch
	Wireless: 802.11 b/g/n (optional)
Other On-board Devices and Interfaces	Touchscreen & Controller:
	5-wire resistive type single touch window (Penmount 9000), 3H
	2-point projected capacitive touch window (EETI EXC7200), 6H
Serial	2 x RS-232
	1 x RS-232/422/485
<b>Power</b>	
Input	1 x 9V ~ 36V DC jack (4-pin)
	1 x 9V ~ 36V DC terminal block
Power consumption	42W
Power Jack	1 x 9 V~36 V DC jack (4-pin)
Power Supply	P/N: 63040-010060-110-RS
	60W Power Adapter
	Input: 90 - 264V AC, 50/60Hz
	Output: 12V DC
<b>Environment</b>	
Operating Temperature	-10°C ~ 50°C with air flow
Safety & EMC	CE/FCC, MIL-STD-810F 514.5C-2 (with SSD)
Humidity	10% to 95% (non-condensing)
<b>Physical Characteristics</b>	
Construction	Extruded aluminum alloys
	IP 65 compliant front panel
	Panel mount, rack mount, VESA 100x100
<b>Dimensions</b>	
Dimensions	341.4 x 408.4 x 51.8
<b>Weight</b>	
Weight	5kg
<b>Color</b>	
Color	Black
<b>Expansion Slots</b>	
Expansion Slots	1 x Full-size/half-size PCIe Mini slot (PCIe/USB signal)
<b>Option</b>	
iRIS	1 x iRIS-2400 (Optional)

## Ordering Information

PPC-F17B-BT-QGW-J1/4G/PC-R10	17 inch 350 cd/m2 SXGA Panel PC with IntelR CeleronR Processor J1900, TDP 10W, 2GB RAM*2, support iRIS-2400, black color, with QTS-Gateway, 9-36V DC input, projected capacitive touch window, R10
------------------------------	--

## Packing List

1 x Screw kt	1 x Power cord
--------------	----------------