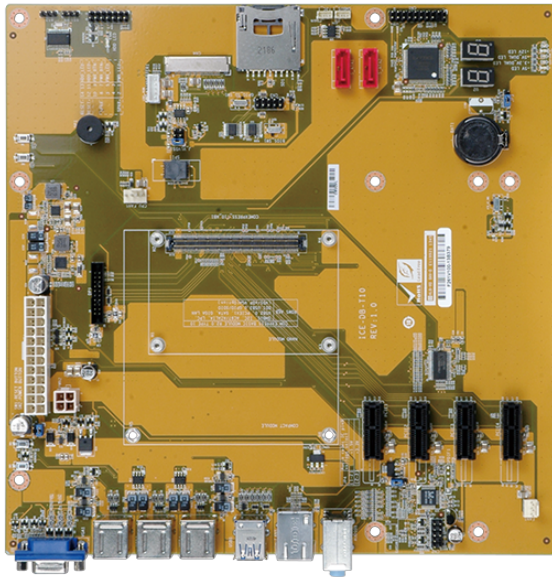


ICE-DB-T10

Baseboard for COM Express Type 10 Module COM.0 Rev. 2.1, support PICMG EAPI R1.0



Features

- » Intel® 22nm Atom™ on-board SoC supported
- » Type 10 connector pinout according to COM.0 R2.1
- » Supports 2 GB 1066/1333 MHz DDR3L memory
- » Optional soldered down 4 GB SSD
- » IEI One Key Recovery solution allows you to create rapid OS backup and recovery
- » Support wide range operating temperature: -40°C to +85°C

Specifications

Physical Characteristics	
Dimensions (LxWxH) (mm)	243.8 X 243.8
Net Weight	350g
Storage	
Storage	2 x SATA 1 x SD/MicroSD card
I/O Interface	
Display Output	1 x VGA 1 x Display Port 1 x eDP
Ethernet	1 x LAN
Audio	Description: Realtek ALC662 HD Audio codec 1 x Line in 1 x Line out 1 x Mic 1 x Front Audio :2x5 pin
I/O Interface	6 x External USB 2.0 2 x External USB 3.2 Gen1x1
Expansion	4 x PCIe x1
Other Features	
TPM	2x10 pin
Environment	
Operating Temperature	-20°C ~ 60°C
Storage Temperature	-30°C ~ 70°C
Certifications	
Safety & EMC	CE/FCC compliant

Ordering Information

ICE-DB-T10-R10	Base Board for COM Express Type 10 Module support PICMG COM.0 R2.1
----------------	--------------------------------------------------------------------

