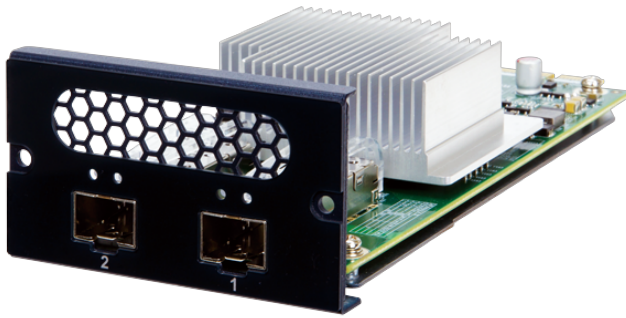


# PuIM-25G2SF

Mellanox ConnectX-4 Lx based Network Interface Card support Dual 25GbE with 2 x SFP28 and PCIe 3.0 x8 Interface



## Features

- » 2 x Mellanox ConnectX-4 Lx EN
- » 2 ports 25 GbE SFP28 connector
- » PCIe 3.0 x8
- » RoHS /CE/FCC compliant
- >> [PuIM Series Selection Guide Page](#)

## Specifications

Physical Characteristics	
Dimensions (LxWxH) (mm)	165.50 (L) x 77.8 (W) x 44.2 (H)
I/O Interface	
Ethernet	2 x SFP+ (SFP28)
Environment	
Operating Temperature	0°C ~ 40°C (32°F ~ 104°F)
Storage Temperature	-20°C ~ 75°C (-4°F ~ 167°F)
Humidity	5% ~ 90% RH, Non-condensing
Certifications	
Safety & EMC	RoHS/CE/FCC compliant
Card Slot Interface	
PCIe	PCIe 3.0 x8
Card Features	
Speed	1GbE/10GbE/25GbE
Controller Chip	Mellanox ConnectX-4 Lx EN

## Ordering Information

PuIM-25G2SF-MLX-R10	Mellanox ConnectX-4 Lx based Network Interface Card support Dual 25GbE with 2 x SFP28 by 1 PCIe 3.0 x 8 Interface.
---------------------	--

## Packing List

1 x PuIM-25G2SF-MLX module	1 x L-shaped T10 Plum Wrench
1 x QIG	