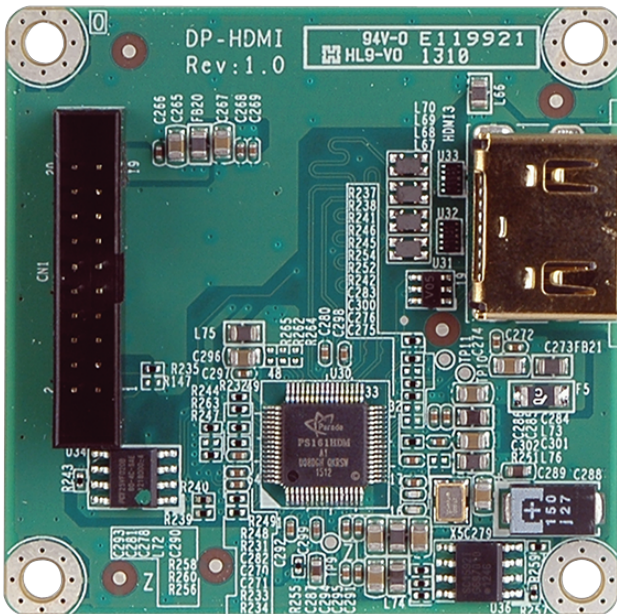


DP-HDMI

DisplayPort to HDMI 1.3a Converter Board (for IEI iDP DP-HDMI-R10 connector)



Features

- » DisplayPort to HDMI 1.3a output
- » Support up to 1920x1200 resolution

Specifications

Physical Characteristics

Dimensions (LxWxH) (mm) 50 X 50

I/O Interface

Display Output 1 x HDMI :1.3a

Environment

Operating Temperature -10°C ~ 60°C

Humidity 5% ~ 95%, non-condensing

Ordering Information

DP-HDMI-R10	DisplayPort to HDMI converter board (For iEi IDP connector)
-------------	---