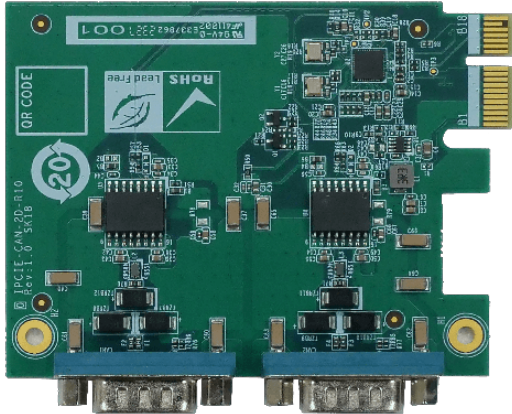


# IPCIE-CAN-2D

PCIe card supports 2-Port CAN Bus with Isolation Protection, RoHs



## Features

- » PCIe card supports 2 x Independent CAN ports
- » Up to 1 Mbps transmission speed
- » Support 16 MHz CAN controller frequency
- » Two CANBus (DB9) port module with isolating

## Specifications

Form Factor	
Form Factor	PCI Express® x1
	Protocol: CAN 2.0 A/B
System	
Chipset	Fintek F81601 (PCIe to CAN), Chipanalog CA-IS3062 (CAN Transceiver)
外觀	
外觀尺寸 ( mm )	70mm x 90mm
Net Weight	GW: 120g / NW: 80g
I/O Interface	
I/O Interface	2 x CAN-bus/OBD-II : 2.0B port with isolation
環境	
操作溫度	0°C ~ 60°C
存儲溫度	-30°C ~ 70°C
濕度	5% ~ 95%, non-condensing
認證	
電磁兼容與安規	CE/FCC compliant
Card Slot Interface	
PCIe	PCIe x1

## Ordering Information

IPCIE-CAN-2D-R10	PCIe x1 card supports 2-Port CAN Bus with Isolation Protection, RoHs
------------------	----------------------------------------------------------------------

## Packing List

1 x IPCIE-CAN-2D card	1 x IO Shielding
1 x QIG (Quick Installation Guide)	