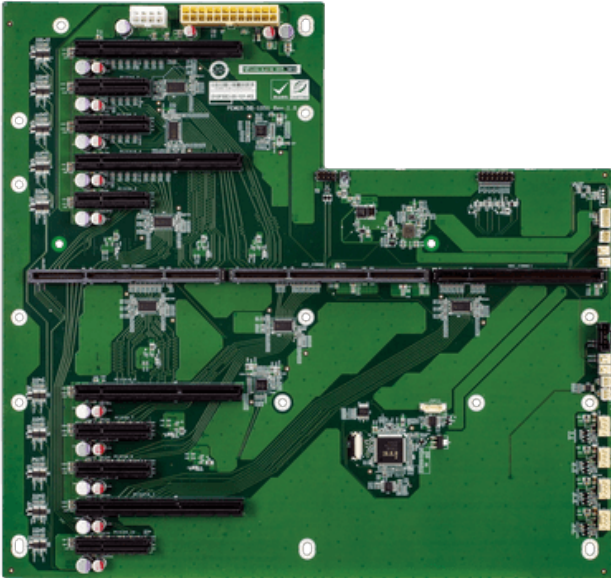


PEMUX-DB-10S1

1-Slot PEMUX backplane, 4 PCIe Gen 3.0 x8 w/ x16 slot, 6 PCIe Gen3.0 x4 w/ x4 slots, and RoHS



Features

1-Slot PEMUX backplane, 4 PCIe Gen 3.0 x8 w/ x16 slot, 6 PCIe Gen3.0 x4 w/ x4 slots, and RoHS

Specifications

Physical Characteristics	
Dimensions (LxWxH) (mm)	327.69 X 311.10
I/O Interface	
Expansion	4 x PCIe x8
	6 x PCIe x4
Power	
Power Supply	ATX power, 24+8pin ATX

Ordering Information

PEMUX-DB-10S1-R10	1-Slot PEMUX backplane, 4 PCIe Gen 3.0 x8 w/ x16 slot, 6 PCIe Gen3.0 x4 w/ x4 slots, and RoHS
-------------------	---