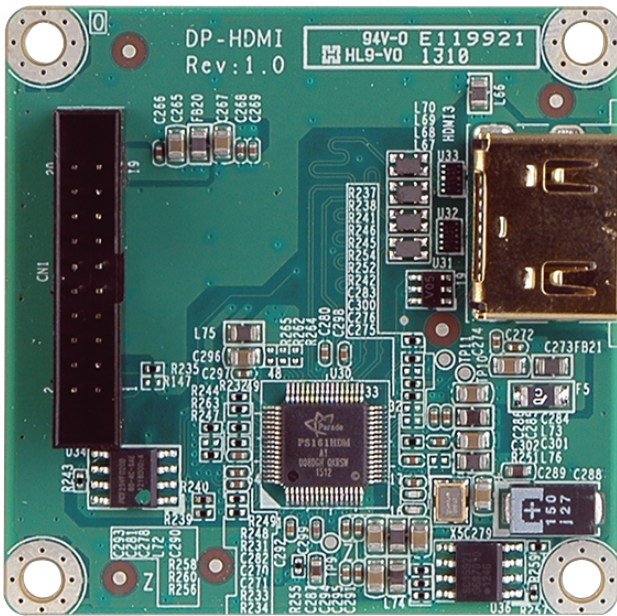


# DP-HDMI

DisplayPort to HDMI 1.3a Converter Board (for IEI iDP DP-HDMI-R10 connector)



## Features

- » DisplayPort to HDMI 1.3a output
- » Support up to 1920x1200 resolution

## Specifications

| Physical Characteristics |                          |
|--------------------------|--------------------------|
| Dimensions (LxWxH) (mm)  | 50 X 50                  |
| I/O Interface            |                          |
| Display Output           | 1 x HDMI :1.3a           |
| Environment              |                          |
| Operating Temperature    | -10°C ~ 60°C             |
| Humidity                 | 5% ~ 95%, non-condensing |

## Ordering Information

|             |   |
|-------------|---|
| DP-HDMI-R10 | DisplayPort to HDMI converter board (For iEi IDP connector) |
|-------------|---|