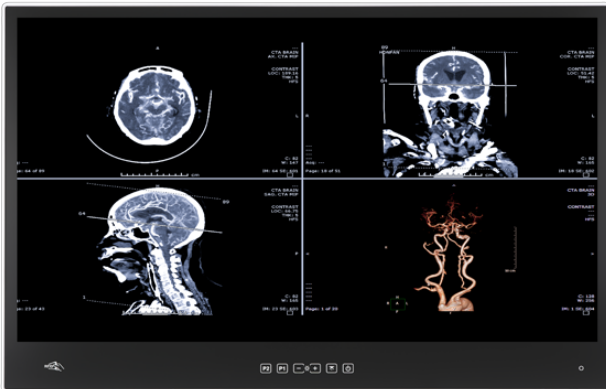


POCi-W24C-RPL

Medical Panel PC



Features

- » Dual reading light
- » Chemical etching AG coating
- » Modular PCIe x4 expansion slot
- » Aluminum front bezel (IP66) & PC/ABS rear cover
- » FHD IPS panel with optional DICOM preset module
- » 13th Generation Intel® Raptor Lake-P platform
- » Built-in medical-grade power supply

Specifications

| Display | |
|-------------------------------------|---|
| LCD Size | 23.8" |
| LCD Resolution | 1920 x 1080 |
| LCD Brightness (cd/m ²) | 350 |
| LCD Contrast Ratio | 1000:1 |
| LCD Color | 16.7M (RGB 8-bit) |
| LCD Pixel Pitch (mm) | 0.2745 (H) x 0.2745 (V) |
| LCD Viewing Angle (H-V) | 178°/178° |
| LCD Backlight MTBF | 30000 |
| Touch Screen | PCAP |
| Touch Controller | EETI |
| Touch Surface Hardness | 6H |
| Touchscreen Coating | Chemical etching AG |
| System | |
| Processor | 13th Gen Intel® Core™ i5-1340PE/ i7-1370PE (Raptor Lake-P) |
| Supported OS | Windows 11; Linux Ubuntu |
| Network | |
| Ethernet Controller | Intel® I226-V |
| Wi-Fi | IEEE 802.11 a/b/g/n/ac/ax, Intel® Wi-Fi 6E AX210 |
| Bluetooth | Bluetooth V5.2 |
| Storage | |
| Storage | 2 x M.2 2280 M key (PCIe/ SATA) with RAID |
| RAM | 2 x 262-pin 4800MT/s dual-channel DDR5 SO-DIMM slots (system max. 64GB) |
| Expansion Slots | |
| Expansion Slots | 1 x PCIe x2 |
| | 1 x M.2 2230 A-E key (PCIe+USB) |
| | 2 x M.2 2260/80 B-M key (PCIe/ SATA) |
| Audio | |
| Speaker | 2 x 2W speaker |
| Microphone | 1 x Digital mic |
| I/O Interface | |
| Side I/O | 2 x USB 2.0 port |
| Rear I/O | 1 x AC jack |
| | 1 x HDMI output |
| | 1 x USB Type-C (DP + USB 5V/3A) |

| | |
|---------------------------------|--|
| | 1 x Combo audio-out/mic-in |
| | 2 x RS-232 |
| | 2 x 2.5GbE LAN port |
| | 4 x USB 3.2 Gen 2 (10Gb/s) port |
| Indicator&Buttons | |
| Buttons | 1 x Power on/off |
| | 1 x AT/ATX switch |
| | 1 x Reset button |
| | 1 x Clear CMOS Button |
| Indicators | 1 x Power indicator |
| Other Features | |
| OSD Function | 1 x Power on/off |
| | 1 x Reading light on/off |
| | 1 x Brightness up |
| | 1 x Brightness down |
| | 1 x LCD & touch lock on/off |
| | 1 x DICOM mode app on/off (optional) |
| Physical Characteristics | |
| Thermal | Fanless |
| Construction Material | ABS+PC plastic |
| Mounting | Wall, Stand and Arm; VESA 75/100 compliant |
| Weight (Net) (kg) | 8.1 kg |
| Dimensions (LxWxH) (mm) | 567 x 370.6 x 63.9 mm |
| Power | |
| Input | 85V – 264V AC input |
| Built-in Power Supply | 150W, 85V – 264V AC, medical power supply |
| Environment | |
| Operating Temperature | 0°C ~ 40°C |
| Storage Temperature | -20°C ~ 60°C |
| Humidity | 10% ~ 90% (non-condensing) |
| Vibration | 1G |
| Operating Shock | 5G peak acceleration (11ms duration) |
| Non-operating shock | 15G peak acceleration (11ms duration) |
| IP Level | Front: IP66 |
| Certifications | |
| Safety & EMC | CE, FCC Class B Part18, UL 60601-1, IEC/EN 60601-1, IEC/EN 60601-1-2 |

Ordering Information

| | |
|----------------------------|--|
| POCi-W24C-RPL-i7/PC-R10 | 23.8" 350cd/m ² FHD medical panel PC with 13th generation 10nm Intel®Raptor Lake-P Core™ i7-1370PE 4.8GHz on-board processor,802.11a/b/g/n/ac/ax Wi-Fi 6E module,PCAP touchscreen w/ AG coating,R10 |
| POCi-W24C-RPL-i7/PC/DI-R10 | 23.8" 350cd/m ² FHD medical panel PC with 13th generation 10nm Intel®Raptor Lake-P Core™ i7-1370PE 4.8GHz on-board processor,802.11a/b/g/n/ac/ax Wi-Fi 6E module,PCAP touchscreen w/ AG coating,DICOM,R10 |
| POCi-W24C-RPL-i5/PC-R10 | 23.8" 350cd/m ² FHD medical panel PC with 13th generation 10nm Intel®Raptor Lake-P Core™ i5-1340PE 4.5GHz on-board processor,802.11a/b/g/n/ac/ax Wi-Fi 6E module,PCAP touchscreen w/ AG coating,R10 |

Packing List

| | |
|----------------------|--|
| 1 x Power Cord (C13) | |
|----------------------|--|